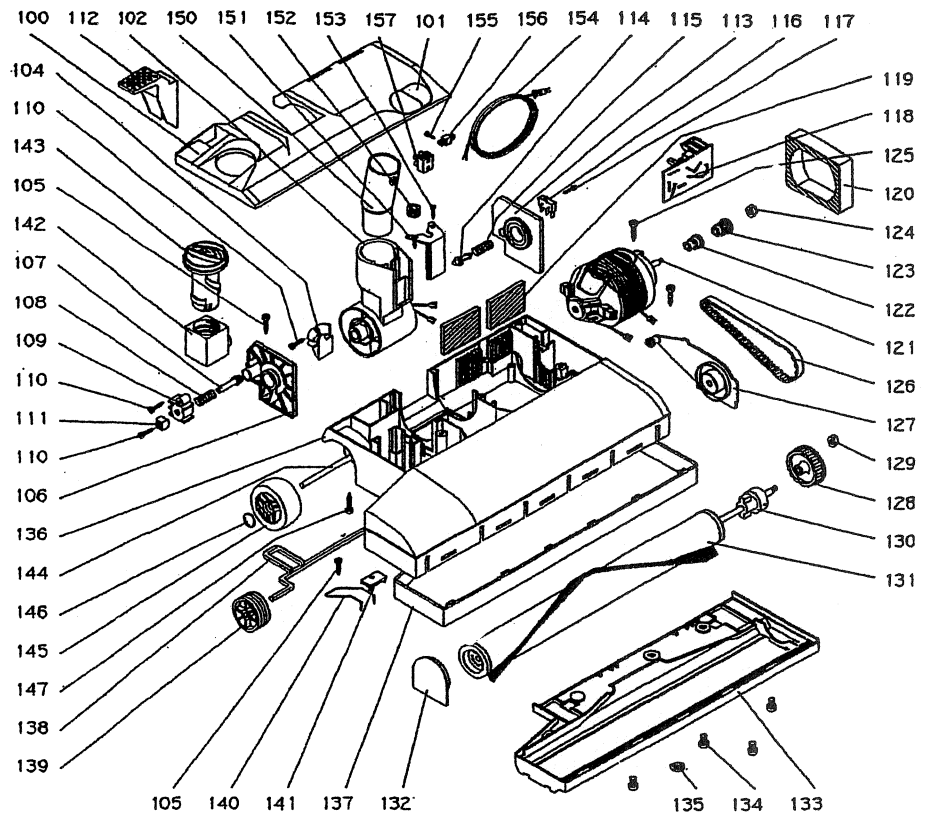


LINDHAUS® PB 12"/14"



SPARE PARTS LIST

| POS. | DESCRIPTION | POS. | DESCRIPTION |
|--------|-----------------------------------|--------|---------------------------------|
| PB 100 | Base housing cover | PB 128 | Brush pulley |
| PB 101 | Lens set red and green new | PB 129 | Nut M6 brush pulley |
| PB 102 | Joint complete | PB 130 | Brush shaft with insert 12"-14" |
| PB 104 | Joint pin slide | PB 131 | Brush 12" - Brush 14" |
| PB 105 | Screw 3.9x13 | PB 132 | Bush support |
| PB 106 | Support right joint | PB 133 | Brush shoe plate 12" - 14" |
| PB 107 | Plunger handle release | PB 134 | Screw M6x9 |
| PB 108 | Spring dowel release | PB 136 | Body main brush head 12" - 14" |
| PB 109 | Bushing | PB 137 | Bumper 12" - 14" |
| PB 110 | Screw 2.9x16 | PB 138 | Front axle |
| PB 111 | Slide | PB 139 | Front wheel rubber |
| PB 112 | Foot pedal | PB 140 | Spring |
| PB 113 | Support left joint | PB 141 | Spring top plate |
| PB 114 | Switch activator pin | PB 142 | Brush adjuster |
| PB 115 | Spring switch activator pin | PB 143 | Adjusting knob |
| PB 116 | Microswitch | PB 144 | Rear axle |
| PB 117 | Screw 2.2x16 | PB 145 | Rear wheel rubber |
| PB 118 | Circuit board PB 12"-14" | PB 146 | Wheel retainer cup |
| PB 119 | Exhaust filter | PB 147 | Screw 3.5x19 |
| PB 120 | Motor filter | PB 150 | Swivel connector |
| PB 121 | Brush motor V. 240/50 - V. 120/60 | PB 151 | Bracket |
| PB 122 | Pinion spacer | PB 152 | Strain relief |
| PB 123 | Pinion | PB 153 | Screw 2.9x16 |
| PB 124 | Nut pinion | PB 154 | Cord |
| PB 125 | Screw 3.9x16 | PB 155 | Screw 2.9x9.5 |
| PB 126 | Timing belt 6 mm | PB 156 | Cord clamp |
| PB 127 | Transmission support | PB 157 | Connector block |