

Changing The Handle On An Electric Hose

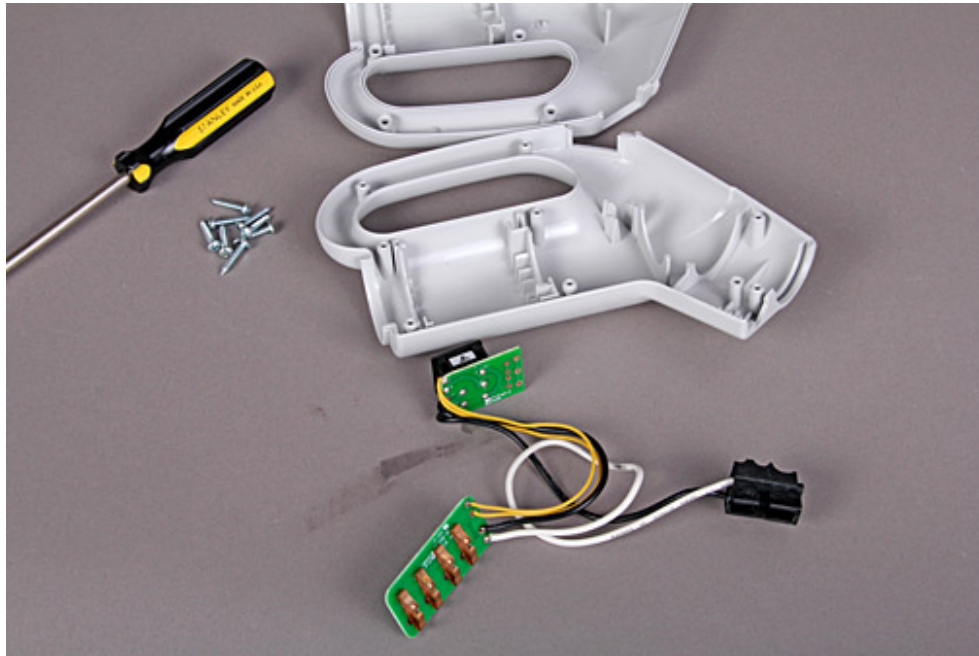
1. Remove the eight (8) screws holding the two pieces of the handle together. They can be seen on the side of the handle.



2. Separate the two pieces and remove the hose from the handle.



3. Transfer the switch from the old handle to the new handle. It will slide out of the old handle and into the new one the same way.



4. Insert the hose end into the new handle.



5. Place the other half of the new handle into place to close, and then insert the included eight (8) screws.

