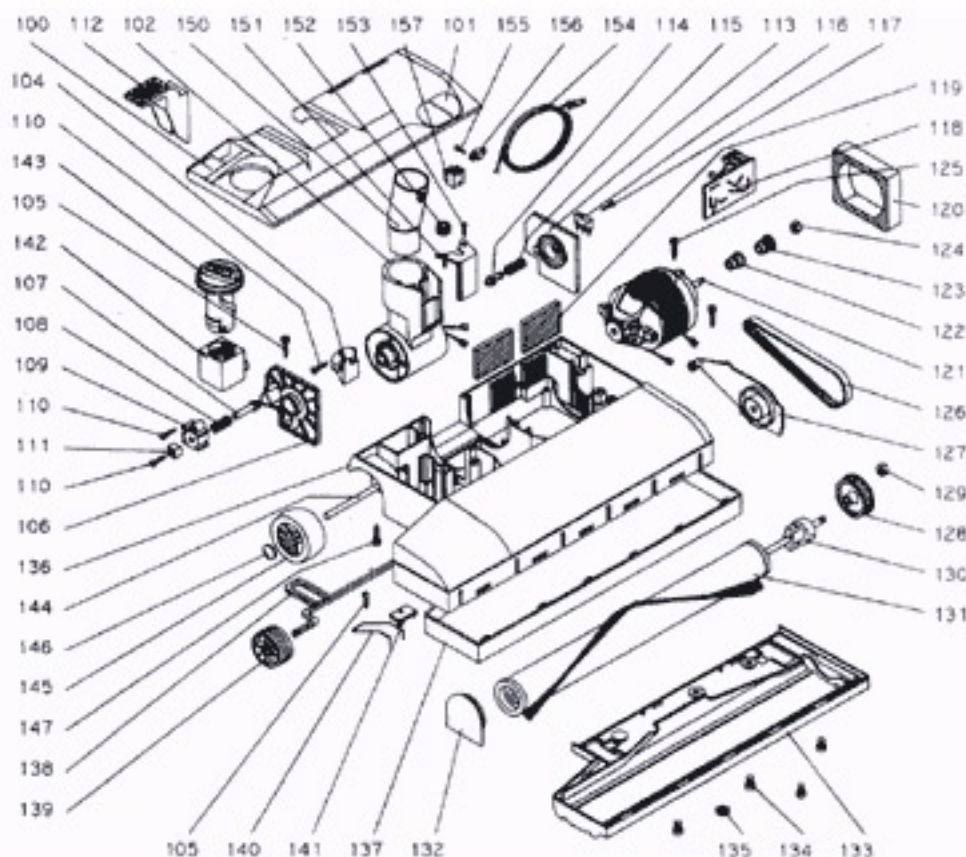


# LINDHAUS® PB12"/14"



## SPARE PARTS LIST

POS.	DESCRIPTION	POS.	DESCRIPTION
PB 100	Base housing cover	PB 128	Brush pulley
PB 101	Lens set red and green new	PB 129	Nut M6 brush pulley
PB 102	Joint complete	PB 130	Brush shaft with insert 12"-14"
PB 104	Joint pin slide	PB 131	Brush 12" - Brush 14"
PB 105	Screw 3.9x13	PB 132	Bush support
PB 106	Support right joint	PB 133	Brush shoe plate 12" - 14"
PB 107	Plunger handle release	PB 134	Screw M6x9
PB 108	Spring dowel release	PB 136	Body main brush head 12" - 14"
PB 109	Bushing	PB 137	Bumper 12" - 14"
PB 110	Screw 2.9x16	PB 138	Front axle
PB 111	Slide	PB 139	Front wheel rubber
PB 112	Foot pedal	PB 140	Spring
PB 113	Support left joint	PB 141	Spring top plate
PB 114	Switch activator pin	PB 142	Brush adjuster
PB 115	Spring switch activator pin	PB 143	Adjusting knob
PB 116	Microswitch	PB 144	Rear axle
PB 117	Screw 2.2x16	PB 145	Rear wheel rubber
PB 118	Circuit board PB 12"-14"	PB 146	Wheel retainer cup
PB 119	Exhaust filter	PB 147	Screw 3.5x19
PB 120	Motor filter	PB 150	Swivel connector
PB 121	Brush motor V. 240/50 - V. 120/60	PB 151	Bracket
PB 122	Pinion spacer	PB 152	Strain relief
PB 123	Pinion	PB 153	Screw 2.9x16
PB 124	Nut pinion	PB 154	Cord
PB 125	Screw 3.9x16	PB 155	Screw 2.9x9.5
PB 126	Timing belt 6 mm	PB 156	Cord clamp
PB 127	Transmission support	PB 157	Connector block